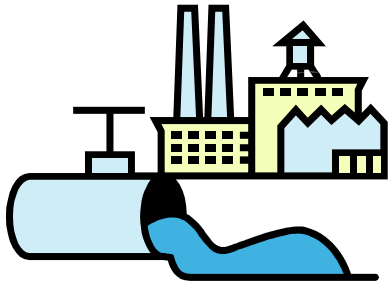


# City of Moorhead

## Stormwater Pollution Prevention Program

### Commercial & Industrial Best Management Practices (BMPs)



#### BEST MANAGEMENT PRACTICES (BMPs)

BMPs are procedures and practices used to prevent pollutants and other hazardous materials from entering the storm sewer system. Once potential and existing sources of pollutants have been identified, the next step is to select the proper BMPs to eliminate or reduce stormwater pollution

#### POLLUTANTS OF CONCERN INCLUDE:

- ◆ Sediment
- ◆ Trash and Debris
- ◆ Pesticides
- ◆ Fertilizers
- ◆ Cleaners, soaps, & detergent
- ◆ Chemicals
- ◆ Metals
- ◆ Oil and Grease
- ◆ Pet Waste

#### PREVENTIVE MAINTENANCE

- ◆ Keep equipment and vehicles in good working condition. Inspect frequently for leaks and repair as needed.
- ◆ Label all storm drain inlets on your property. **NO DUMPING DRAINS TO RIVER.** Contact the FM River Keepers about the Storm Drain Marking Program.

#### GOOD HOUSEKEEPING

- ◆ Instead of using a hose or pressure washer, try using dry cleanup methods. Wash water should be disposed of in the sanitary sewer, NEVER to the storm sewer.
- ◆ Minimize the use of cleaning solutions and agents.
- ◆ Keep site free of litter and debris. Place trash cans and recycling bins around the site to minimize litter.

#### MATERIAL STORAGE AND HANDLING

- ◆ When possible, store materials indoors or under a covered area not exposed to rain. If materials can not be stored under cover, place the material on pallets and cover them with a tarp to avoid contact with stormwater run-off.

- ◆ Store liquids, hazardous waste and other chemicals in a designated area with secondary containment. Keep outdoor storage areas in good condition.

#### WASTE MANAGEMENT

- ◆ Sweep up around dumpsters and other areas frequently to prevent trash from accumulating.
- ◆ Dumpsters should always be kept closed to prevent rainwater from entering. Never place liquid waste, leaky garbage bags and hazardous waste in a dumpster or trash bin.
- ◆ Recycle cans, bottles, newspaper, office paper, and cardboard.

#### VEHICLE WASHING AND CLEANING

- ◆ Wash company vehicles at a commercial car wash whenever possible. If vehicles are washed onsite, wash water must be contained and disposed of in the sanitary sewer.

#### SPILL RESPONSE

- ◆ Use brooms and absorbents such as kitty litter or sawdust to clean up small spills. Report significant spills to the Stormwater staff immediately. For hazardous spills contact the Moorhead Fire Department.
- ◆ Keep rags, mops, and absorbents readily accessible. Dispose of waste properly.

#### DID YOU KNOW

Storm drains are NOT connected to the sanitary sewer system or wastewater treatment plant. The primary purpose of a storm drain is to carry rainwater and snowmelt away from developed areas to prevent flooding. As water flows on the ground it picks up a variety of pollutants that flow into local stormwater ponds, ditches and the Red River.



**Only Rain in the Storm Drain**