

Urban Woods and Prairies Initiative

UW&PI Sites Approved by City Council February 23, 2015 and within MOU

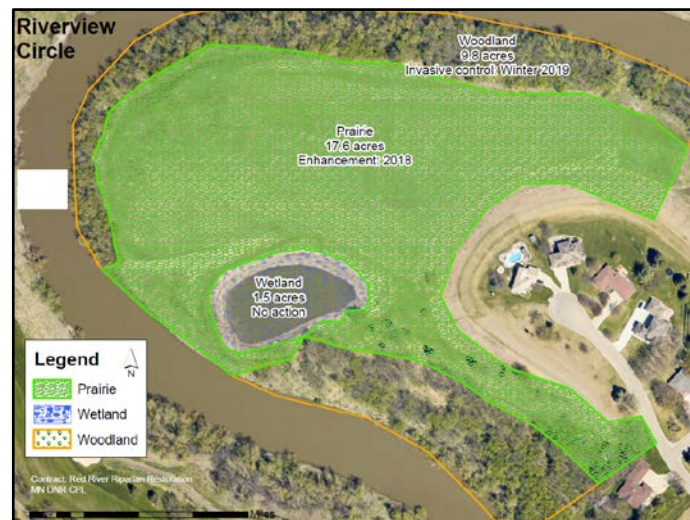
1. North River Drive

- a. 2018: restoration and planting
- b. 2019: Woodland restoration and invasive removal
- c. 2020: Woodland restoration and invasive removal



2. Riverview Circle

- a. 2018: restoration and planting
- b. 2019: Woodland restoration and invasive removal
- c. 2020: Woodland restoration and invasive removal



3. Homestead Prairie

- a. 2018: restoration and planting
- b. 2019: enhancements and woodland restoration
- c. 2020: enhancements and woodland restoration



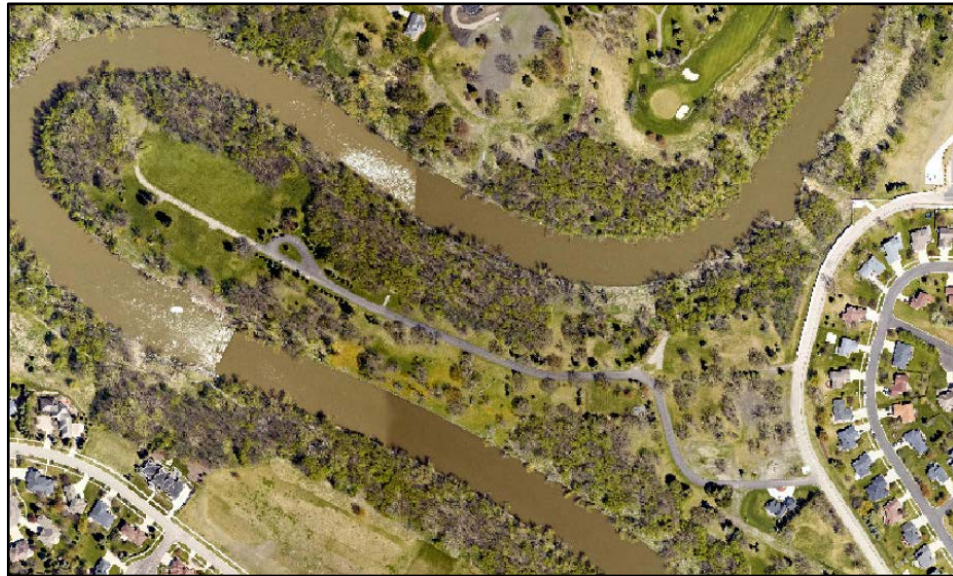
4. Riverfront Park

- a. 2019: Woodland restoration and invasive removal with small pockets of prairie restoration
- b. 2020: enhancements and woodland restoration



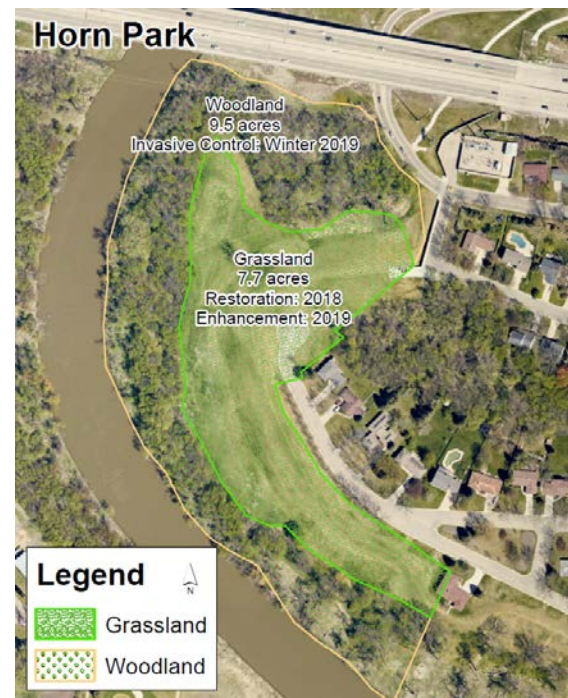
5. River Oaks Park

- a. 2019: Woodland restoration and invasive removal
- b. 2020: Woodland restoration and invasive removal



6. Horn Park

- a. 2018: Restoration site
- b. 2019: Woodland restoration and invasive removal
- c. 2020: Woodland restoration and invasive removal



UW&PI Sites Approved by City Council May 29, 2018 and within Addendum 1 to MOU

1. MB Johnson Woodland

- a. STATUS: Not currently scheduled – anticipated Woodland restoration in a future year



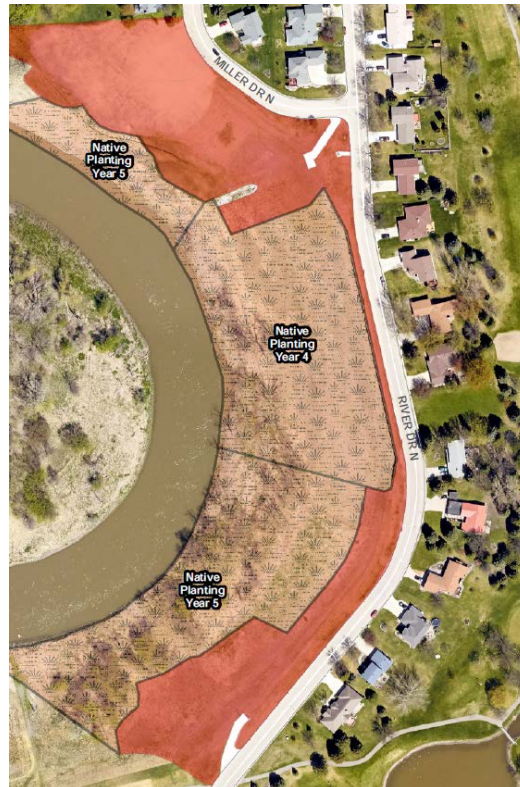
2. Homestead Park

- a. Current native planting area
- b. 2018: Wildflower plantings and weed removal
- c. 2019: Woodland restoration and invasive removal
- d. 2020: Woodland restoration, invasive removal and enhancements



3. North River Grassland

- a. Current native planting area
- b. 2018: Wildflower plantings and weed removal
- c. 2019: Woodland restoration
- d. 2020: Woodland restoration



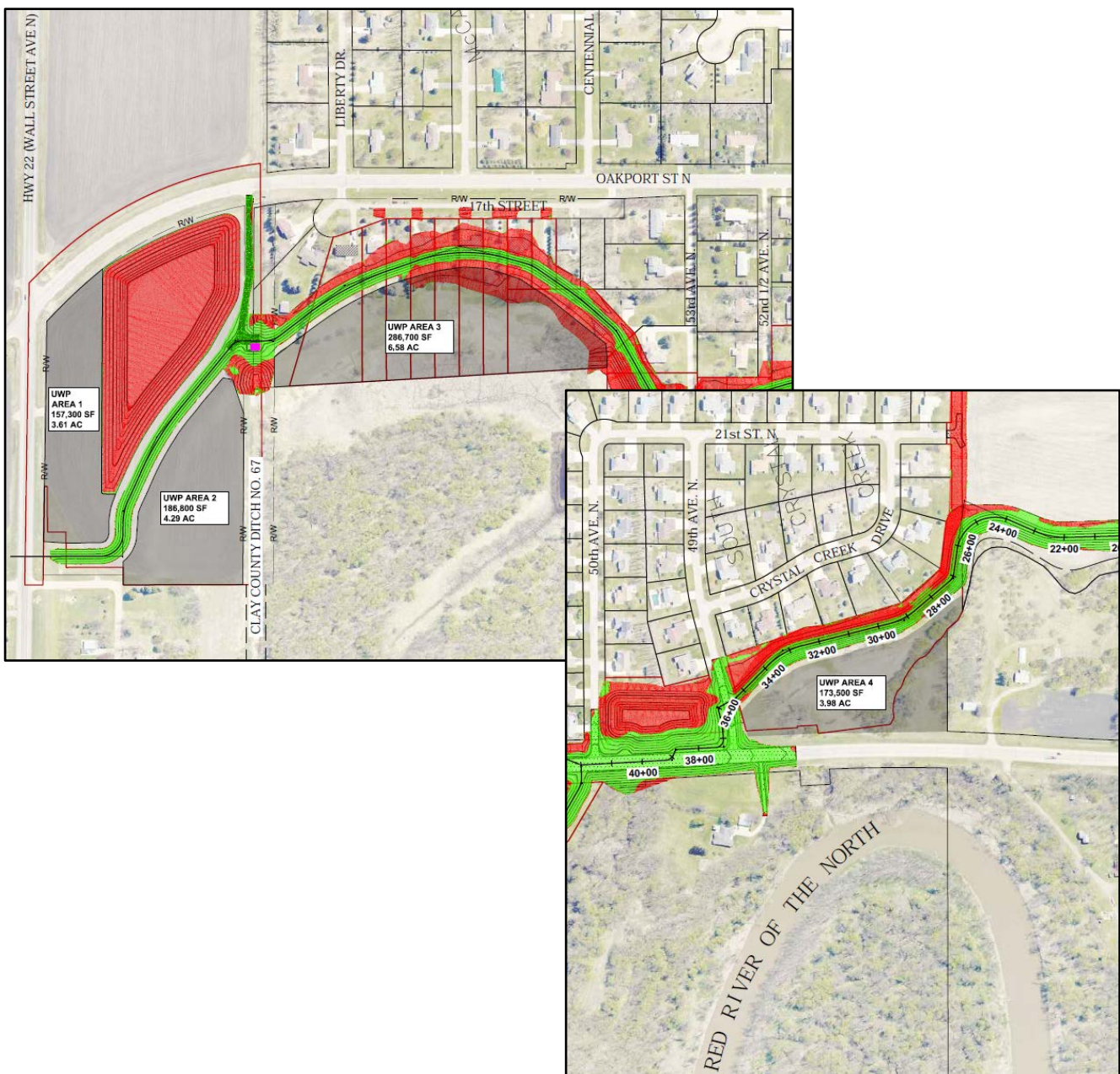
4. 15th Avenue Stormwater Pond

- a. STATUS: Pond construction 2018 (City)
- b. Identify areas around pond for habitat and plantings, implement best practices



UW&PI Sites Approved by City Council May 11, 2020 and within Addendum 2 to MOU

1. **Probstfield Prairie – Area 1**
 - a. Final area/use yet to be determined. Awaiting flood mitigation project completion; restoration (if determined as final use) is currently unfunded.
2. **Probstfield Prairie – Area 2**
 - a. Awaiting flood mitigation project completion; restoration is currently unfunded
3. **Probstfield Prairie – Area 3**
 - a. Proposed planting - 2021
4. **Probstfield Prairie – Area 4**
 - a. Awaiting flood mitigation project completion; restoration is currently unfunded



Urban Woods and Prairies Initiative: Working Seed Lists

Grass Seed for Drier Areas

lbs. /acre

Big bluestem (<i>Andropogon gerardii</i>)	1
Side oats grama (<i>Bouteloua curtipendula</i>)	2.75
Blue grama (<i>Bouteloua gracilis</i>)	(.2)
Canada wild rye (<i>Elymus canadensis</i>)	(.5)
Slender wheatgrass (<i>Elymus trachycaulus</i>)	1
Little bluestem (<i>Schizachyrium scoparium</i>)	3
Indian grass (<i>Sorghastrum nutans</i>)	(.75)
Sand dropseed (<i>Sporobolus cryptandrus</i>)	(.2)
Prairie dropseed (<i>Sporobolus heterolepis</i>)	(.1)
Green needlegrass (<i>Stipa viridula</i>)	(.5)

Total 10 lbs/acre

Mesic Grass Seed

lbs/Acre

Big bluestem (<i>Andropogon gerardii</i>)	3.2
Side oats grama (<i>Bouteloua curtipendula</i>)	(.5)
Canada wild rye (<i>Elymus canadensis</i>)	(.5)
Slender wheatgrass (<i>Elymus trachycaulus</i>)	1.25
Switch grass (<i>Panicum virgatum</i>)	(.2)
Western wheatgrass (<i>Pascopyrum smithii</i>)	(.5)
Little bluestem (<i>Schizachyrium scoparium</i>)	(.75)
Indian grass (<i>Sorghastrum nutans</i>)	(2.5)
Prairie dropseed (<i>Sporobolus heterolepis</i>)	(.1)
Green needlegrass (<i>Stipa viridula</i>)	(.5)

Total 10 lbs/Acre

Grass Seed for wetter areas

lbs. /acre

Big bluestem (<i>Andropogon gerardii</i>)	3
Canada wild rye (<i>Elymus canadensis</i>)	(.5)
Blue-joint grass (<i>Calamagrostis canadensis</i>)	(.5)
Slender wheatgrass (<i>Elymus trachycaulus</i>)	1
Switch grass (<i>Panicum virgatum</i>)	(.5)
Western wheatgrass (<i>Pascopyrum smithii</i>)	(.5)
Little bluestem (<i>Schizachyrium scoparium</i>)	(.25)
Green bulrush (<i>Scirpus atrovirens</i>)	(.25)
Indian grass (<i>Sorghastrum nutans</i>)	(2)
Cord grass (<i>Spartina pectinata</i>)	1
Green needlegrass (<i>Stipa viridula</i>)	(.5)

Total 10 lbs/Acre

Wildflower Mix for Drier Areas:

17% Purple prairie clover, 16% Black-eyed Susan, 15% Hoary vervain,
10% Leadplant, 10% White prairie clover, 4% Bush clover,
4% Showy Penstemon, 3% Azure aster, 3% Stiff tickseed,
3% Gray goldenrod, 2% Common milkweed, 2% Rough blazing star,
2% Wild bergamot, 2% Prairie rose, 2% Stiff goldenrod,
1% Fragrant giant hyssop, 1% Prairie cinquefoil, 1% Western spiderwort,
1% Golden Alexander, 0.5% Yarrow, 0.5% Northern bedstraw,
all by bulk weight.....8 oz/acre

Mesic Wildflower Mix:

15% Purple prairie clover, 13% Black-eyed Susan, 11% Hoary vervain,
10% White prairie clover, 9% Leadplant, 6% Common ox-eye,
4% Fragrant giant hyssop, 4% Smooth aster, 4% Azure aster,
3% Bush clover, 3% Wild bergamot, 3% Stiff goldenrod, 3% Blue vervain,
3% Golden Alexander, 2% Gray goldenrod, 1% Common milkweed,
1% Stiff tickseed, 1% Canada tick trefoil, 1% Meadow blazing star,
1% Prairie cinquefoil, 1% Mountain mint, 0.5% Yarrow,
0.5% Northern bedstraw, all by bulk weight8 oz/acre

Wildflower Mix Wetter Areas:

10% Blue vervain, 8% Swamp milkweed, 8% Joe-pye weed,
8% Mountain mint, 7% Black-eyed Susan, 6% Boneset,
6% Golden Alexander, 5% Common ox-eye, 4% Smooth aster,
4% New England aster, 4% Sneezeweed, 4% Blue flag iris,
4% Ironweed, 3% Sweet flag, 3% Canada tick trefoil,
3% Meadow blazing star, 3% Tall blazing star, 3% Stiff goldenrod,
2% Purple prairie clover, 2% Tall meadow rue,
1% Grass-leaved goldenrod, 1% Swamp goldenrod,
all by bulk weight.....8 oz/acre

URBAN WOODS AND PRAIRIES INITIATIVE: ESTABLISHMENT PROTOCOL

Site Preparation

1. The project area will be fine graded before the seeding work begins (to be done by the general contractor or excavator).
2. Mow the existing vegetation, preferably with a sickle or flail type mower, to a height of 4" to 6".
3. In fall, apply a glyphosate herbicide (Roundup® or equivalent) and a triclopyr herbicide (Garlon 3A® or equivalent) with the appropriate surfactants, as per manufacturer's directions, to the actively growing vegetation in the project area. Site preparation will resume the following spring.
4. Disk or till the soil to stimulate weed seed germination.
5. Harrow or cultipacker the soil to create a smooth seedbed.
6. Respray with a glyphosate herbicide (Roundup® or equivalent) when regrowth of vegetation occurs and when it reaches approximately 8" to 12" in height.

Seed and Seeding

1. Seeding dates will be in the spring or summer before August 10th or in the fall between September 20th and freeze-up.
2. As a means to stabilize the site, the project area will be planted with native grasses only.
3. All grass seed will be applied with a seed drill designed for native seeding (Truax® or equivalent).
4. Wildflower seed could be applied by broadcasting after a prescribed burn at the beginning of the 3rd growing season.
5. The seed mixes will consist of the following species and amounts:

Management

1. Management (maintenance) plays a vital role in the eventual success of any native landscape installation, especially during the establishment period.
2. During the first growing season the project area may need to be mowed to control annual weed development. If a "closed canopy of weed cover develops, it should be mowed to aid in the growth of the prairie seedlings by reducing competition. Mowing may also be necessary if the weeds are about to set seed. Optimum cutting height, depending on the wildflower species present, is typically 4" to 6".
3. In years following the first growing season, management services should include site monitoring, prescribed burning, mowing, spot spraying, spot mowing, herbicide wicking or hand weeding.