

# GRASP™ ANALYSIS - POPULATION DENSITY-BASED AQUATICS - INDOOR & OUTDOOR

## LEGEND

**Inventory**  
 ● Sports Facility - Labels Limited By Scale

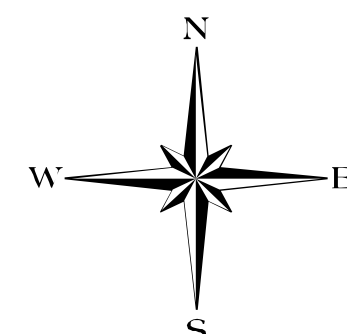
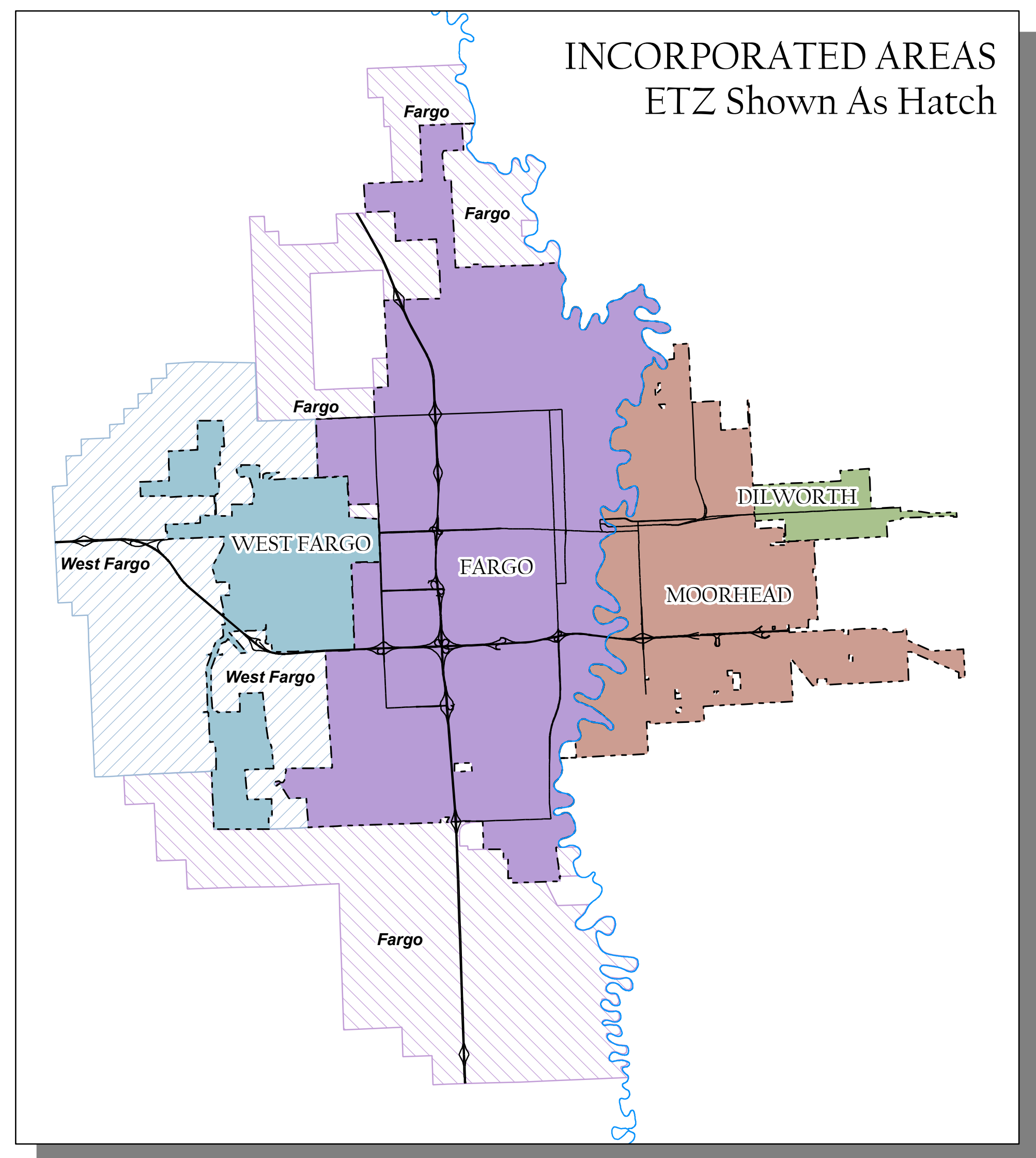
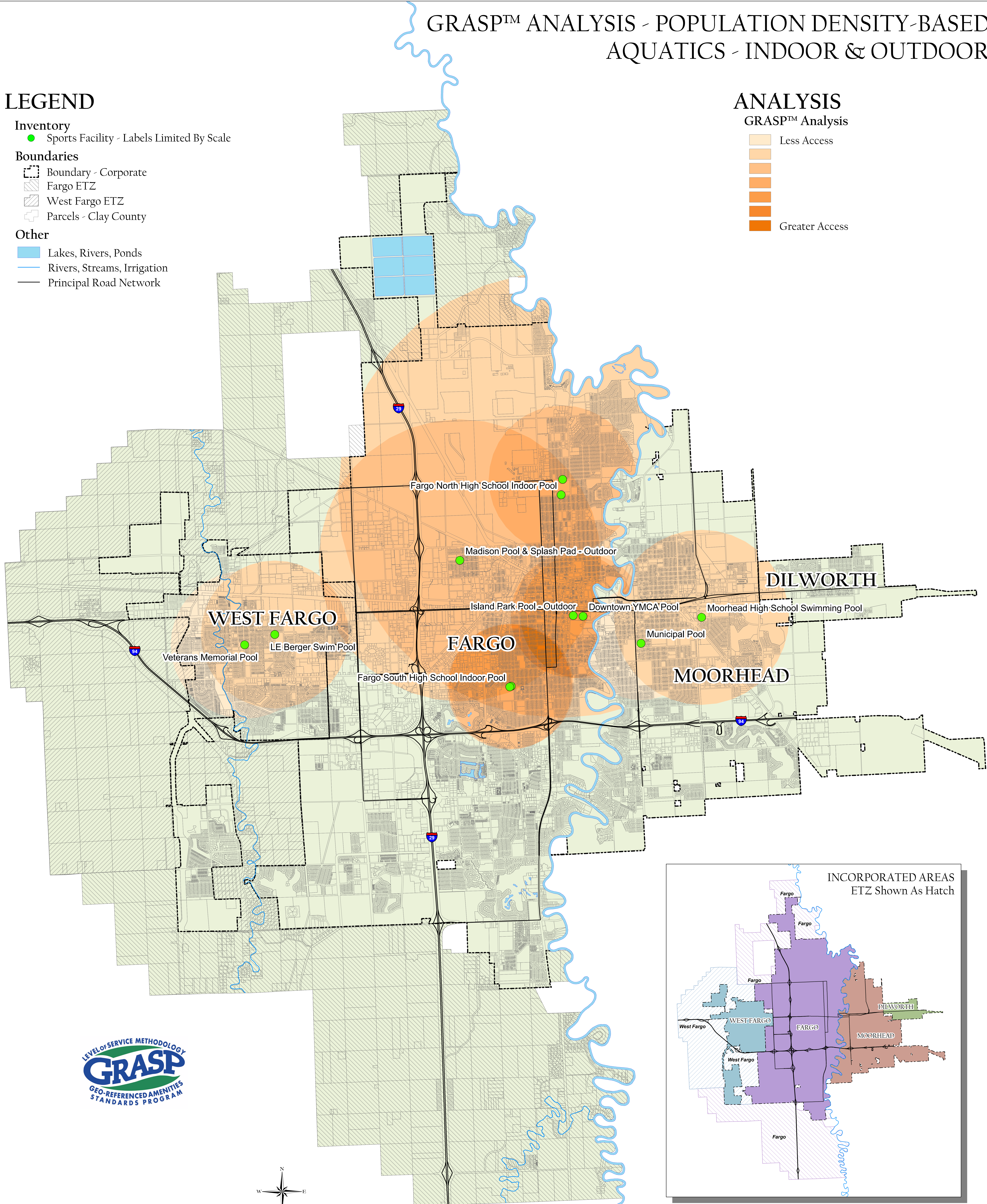
**Boundaries**  
 - - - Boundary - Corporate  
 ▨ Fargo ETZ  
 ▩ West Fargo ETZ  
 □ Parcels - Clay County

**Other**  
 ■ Lakes, Rivers, Ponds  
 — Rivers, Streams, Irrigation  
 — Principal Road Network

## ANALYSIS

GRASP™ Analysis

■ Less Access  
 ■ Greater Access



Map Produced For The Metropolitan Sports Facilities Committee Framework Plan  
 By Geowest, Incorporated - Morrison, Colorado - 303.904.9982  
 The Plan Committee Is Comprised Of Representatives From Fargo And West Fargo North Dakota & Moorhead And Dilworth Minnesota  
 This Map Is Intended For Planning & Discussion Purposes Only. Please Refer To The Plan Document For Map Details  
 Legend Elements May Vary In Size From Those Shown On Map  
 Map Published - September 2005



# METROPOLITAN SPORTS FACILITIES COMMITTEE FRAMEWORK PLAN